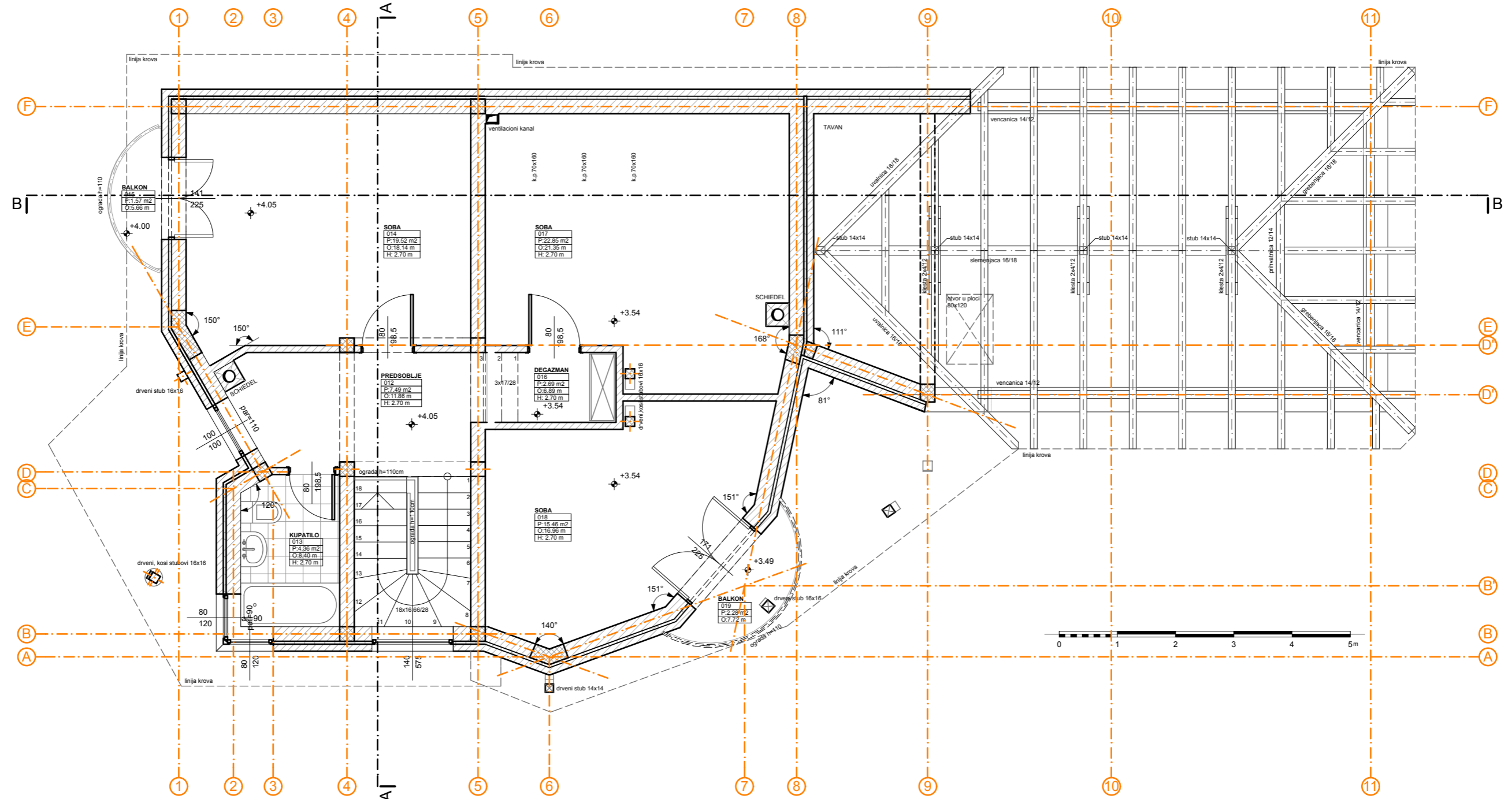
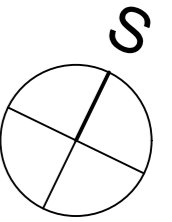


OSNOVA SPRATA R 1:75



PROSTORIJA	VRSTA PODA	O	P
18 soba	parket	16.96 m	15.46 m ²
19 balkon	keramičke ploče	7.72 m	2.28 m ²
UKUPNA NETO KORISNA P. SPRATA		76.22 m² - 3% = 73.93 m²	

ARHITEKT S	naziv crteza:	
	osnova sprata	
investitor:	SR "Bilja"	projektovao:
		Lj. Strika d.i.arh.
objekat:	glavni projekat stambenog objekta Po+P+1, poslovni objekat P, ulica Nova bb, Zrenjanin	G. Mandić d.i.građ.
		mart 2008.
		razmera
		1:75
		broj lista
		6